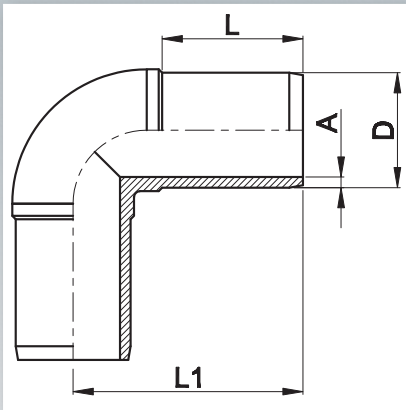


90° Elbow



PE100 | SDR 11 | Water PN 16 | Gas 10 Bar

D (mm)	L (mm)	L1 (mm)	A (mm)	Weight (kg)	Box Quantity
20	41	62	3.0	0.022	60
25	41	65	3.0	0.026	60
32	44	71	3.0	0.043	50
40	49	80	3.7	0.072	42
50	55	96	4.6	0.132	25
63	63	118	5.8	0.274	30
75	70	133	6.8	0.420	30
90	79	148	8.2	0.660	20
110	82	152	10.0	1.310	12
125	87	175	11.4	1.450	12
140	92	207	12.7	2.120	8
160	98	210	14.6	2.860	4
180	105	226	16.4	4.000	4
200	112	253	18.2	5.900	4
225	120	270	20.5	7.200	2
250	129	300	22.7	10.400	1
280	139	348	25.4	16.000	1
315	150	380	28.6	20.950	1

PE100 | SDR 17 | Water PN 10 | Gas 6 Bar

D (mm)	L (mm)	L1 (mm)	A (mm)	Weight (kg)	Box Quantity
50	59	108	3.0	0.132	30
63	63	118	3.8	0.205	30
75	70	133	4.5	0.315	30
90	79	148	5.4	0.470	20
110	82	152	6.6	1.040	12
125	87	175	7.4	1.035	12
140	92	207	8.3	1.460	8
160	98	210	9.5	2.025	4
180	105	226	10.7	2.820	4
200	112	253	11.9	4.245	4
225	120	270	13.4	5.025	2
250	129	300	14.8	7.600	1
280	139	348	16.6	11.700	1
315	150	380	18.7	15.700	1

Every effort has been made to ensure the information in this brochure is correct at the date of issue. Fusion operates a policy of continuous product improvement and range extension and, therefore, reserves the right to modify product specifications in line with market requirements.